

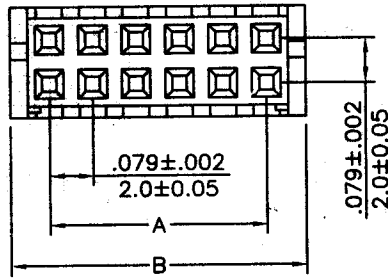
.079"(2.00mm) pitch Wire to Board Connectors



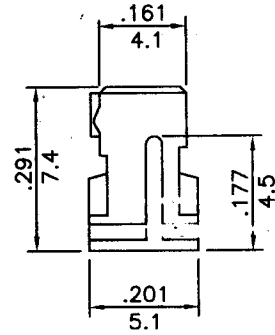
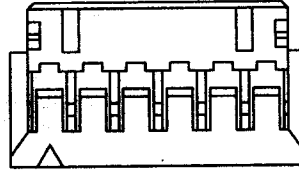
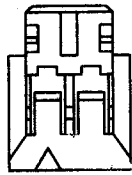
CH2012 Series

- * Poles: 2x 2~2x17
 - * Material: NYLON 66 UL94V-0 white
 - * Suitable CT2012T series terminal
- Specifications**
- * Current rating: 3A AC, DC
 - * Voltage rating: 250V AC, DC
 - * Temperature range: -25°C~+85°C
 - * Insulation resistance: 1,000MΩ min.
 - * Withstand voltage: 800V AC/minute

inches
mm



P/N :2X2



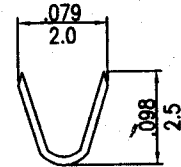
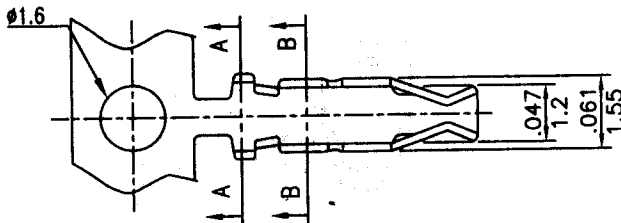
CIRCUITS	PART NO.	DIMENSION in.(mm)		CIRCUITS	PART NO.	DIMENSION in.(mm)	
		A	B			A	B
4	CH2012-2X2	0.079(2.00)	0.232(5.9)	20	CH2012-2x10	0.709(18.00)	0.862(21.9)
6	CH2012-2X3	0.157(4.00)	0.311(7.9)	22	CH2012-2x11	0.787(20.00)	0.941(23.9)
8	CH2012-2X4	0.236(6.00)	0.390(9.9)	24	CH2012-2x12	0.866(22.00)	1.020(25.9)
10	CH2012-2X5	0.315(8.00)	0.469(11.9)	26	CH2012-2x13	0.945(24.00)	1.099(27.9)
12	CH2012-2X6	0.394(10.00)	0.547(13.9)	28	CH2012-2x14	1.024(26.00)	1.177(29.9)
14	CH2012-2X7	0.472(12.00)	0.626(15.9)	30	CH2012-2x15	1.102(28.00)	1.256(31.9)
16	CH2012-2X8	0.551(14.00)	0.705(17.9)	32	CH2012-2x16	1.181(30.00)	1.335(33.9)
18	CH2012-2X9	0.630(16.00)	0.783(19.9)	34	CH2012-2x17	1.260(32.00)	1.413(35.9)

.079"(2.00mm) pitch crimp terminal

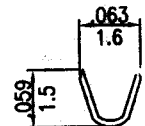
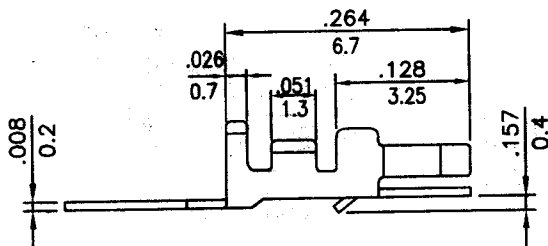
CT2012 Series

- * Material: Brass
- * Finished: Tin-plated
- * Used in CH2012-XX series housings
- * Wire range: AWG#22~#28
- * Insulation O.D: 1.35mm(max)
- * Thickness: 0.2mm
- * Q'TY: 10,000pcs/reel

inches
mm



A-A SECTION



B-B SECTION